

Services Overview



Table of contents

- 03 Value proposition
- 04 About us
- 05 Vision / Mission
- 06 Clients
- 07 Services
- 16 Contacts

Value proposition

Technological solutions for security, resilience and sustainability of infrastructure and territory

Combining advanced research and technological development, NHAZCA creates state-of-the-art solutions that protect and monitor the environment and critical assets.



About us



NHAZCA (Natural HAZards Control and Assessment) is an international leader in the analysis and monitoring of natural hazards and large infrastructures for the management and mitigation of risks.

We are passionate geologists, civil engineers, project managers, and technicians, offering a unique blend of expertise from both the private and academic sectors.

Since 2009, our ambition has been relentless: to transform geological and geotechnical data into action for the prevention and management of natural hazards, ensuring the sustainability of structures and infrastructures, with a single, globally applicable protocol.



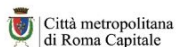
Our mission

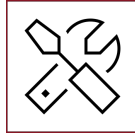
To empower clients with comprehensive solutions for analyzing and monitoring natural hazards and structural health. Through a combination of expertise, innovation, and dedication, we deliver consultancy services and technological tools that enhance safety, optimize performance and minimize risks.

Our vision

To become the premier provider of efficient, reliable, innovative, high-quality products and services for the analysis & monitoring of natural hazards and structural health.

Clients

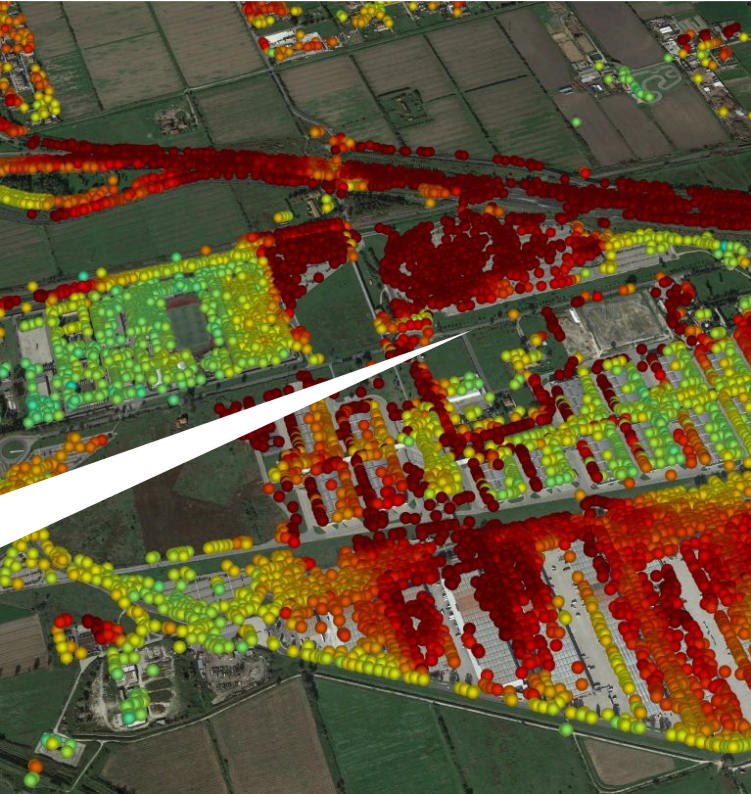




Services



→ Ground Motion Mapping



Ground Motion Mapping is an analytical tool for mapping ground motion associated with geological, geotechnical or geomorphological phenomena, both natural and caused by anthropogenic activities.

Using technologies such as satellite InSAR, terrestrial interferometry, and terrestrial and satellite **PhotoMonitoring™**, we are able to map ground motion and analyze its changes over time to mitigate hazards.

Combining multiple data sources to analyze ground deformation, Ground Motion Mapping is the answer to examining in detail the chronology of a given geological phenomenon and predicting what might happen in the future, anticipating problems before they appear.

Who is Ground Motion Mapping useful for?



Operators and owners of road and rail assets

With Ground Motion Mapping, you can design and build your infrastructure based on fundamental information about the stability of the site and surrounding elements to anticipate geological hazards.



THE ADVANTAGES OF GROUND MOTION MAPPING

Full support

Ground Motion Mapping can help you at all stages, from design to maintenance, to improve the reliability of your infrastructure.

More conscious choices

Our analysis provides critical details on the stability of the site and surrounding elements that are essential for making informed decisions.

Risk prevention

Ground Motion Mapping allows you to identify and anticipate geological hazards, ensuring continuous asset protection.



Public administrations and local authorities

Ground Motion Mapping supports urban development planning and public safety management. These insights can provide tools for spatial development and seismic risk mitigation.



THE ADVANTAGES OF GROUND MOTION MAPPING

Urban planning

Ground Motion Mapping provides valuable data on ground stability, which is essential for urban and spatial planning.

More safety

The analysis contributes to the safe management of the territory by providing critical insight into the mitigation of geohazards.





Mining companies

You can use our analysis to monitor slope stability in working areas and plan new excavation sites. The goal? To make mining safer and prevent landslides and other phenomena.



THE ADVANTAGES OF GROUND MOTION MAPPING

Stability monitoring

Ground Motion Mapping gives you a snapshot of slope stability in work areas, which is essential for preventing landslides and ensuring safe mining operations.

Strategic planning

For you, an essential aid in the selection and planning of new excavation sites, thanks to accurate soil deformation analysis.



Engineering or geology companies

Ground Motion Mapping helps you to get consistent and reliable information on the behavior of ground and infrastructures in all the phases of the project: design, construction, commissioning.



THE ADVANTAGES OF GROUND MOTION MAPPING

Advanced structural analysis

Ground Motion Mapping provides data to support structural analysis, improving the accuracy of assessments and designs.

Integrated project support

Access essential information for the design and construction of roads, bridges and hydrogeological risk mitigation with safe and reliable solutions.

Knowledge of slope stability

Our analysis provides you with the fundamental slope stability data you need to plan projects in areas at risk.



Insurance companies

Ground Motion Mapping reduces the risk associated with insured assets such as buildings and infrastructure. The data allows you to make an accurate risk assessment to better manage potential claims.



THE ADVANTAGES OF GROUND MOTION MAPPING

Reducing insurance risk

Ground Motion Mapping allows you to reduce the level of risk associated with insured assets, such as buildings and infrastructure, through detailed and accurate risk assessment.

Risk assessment

Our analysis provides you with the data you need to accurately assess your risk, improve your claims management and define your insurance policies.



Oil & Gas Companies

With Ground Motion Mapping, you can improve environmental emergency management and use reliable data for the design, construction, maintenance and monitoring of your pipelines.



THE ADVANTAGES OF GROUND MOTION MAPPING

Optimising pipeline management

Improve environmental emergency management and gain access to essential support for pipeline design, construction, maintenance and monitoring based on concrete and reliable data.

Stability and safety

Ground Motion Mapping provides detailed information on the stability of the site and the pipeline environment, which is essential to prevent accidents and ensure the safety of the infrastructure.

Risk prevention

With our analysis, you can reduce the risks associated with ground movement and contribute to safer and more sustainable management of energy resources.

Contacts

**Get in touch with us now and
revolutionise the security of
your area with high
technology**

NHAZCA S.r.l.

VAT & Tax Code: 10711191006

N.REA: RM-1250972

Share capital: €100,000

Office Unique Code: W7YVJK9

Headquarter

Via Vittorio Bachelet, 12

00185 Rome

Tel.: (+39) 06 95.065.820

PEC: nhazcasrl@pec.it

E-mail: info@nhazca.com